

CHANGE  
OF  
WAVES

IBEROSTAR   
HOTELS & RESORTS

Calendar 2021

# 2021

## January / Enero

MON LUN	TUE MAR	WED MIÉ	THU JUE	FRI VIE	SAT SÁB	SUN DOM
				1	2	3
4	5	6	7	8	9	10
11	12	13	14	15	16	17
18	19	20	21	22	23	24
25	26	27	28	29	30	31

## February / Febrero

MON LUN	TUE MAR	WED MIÉ	THU JUE	FRI VIE	SAT SÁB	SUN DOM
1	2	3	4	5	6	7
8	9	10	11	12	13	14
15	16	17	18	19	20	21
22	23	24	25	26	27	28

## March / Marzo

MON LUN	TUE MAR	WED MIÉ	THU JUE	FRI VIE	SAT SÁB	SUN DOM
1	2	3	4	5	6	7
8	9	10	11	12	13	14
15	16	17	18	19	20	21
22	23	24	25	26	27	28
29	30	31				

## April / Abril

MON LUN	TUE MAR	WED MIÉ	THU JUE	FRI VIE	SAT SÁB	SUN DOM
			1	2	3	4
5	6	7	8	9	10	11
12	13	14	15	16	17	18
19	20	21	22	23	24	25
26	27	28	29	30		

## May / Mayo

MON LUN	TUE MAR	WED MIÉ	THU JUE	FRI VIE	SAT SÁB	SUN DOM
					1	2
3	4	5	6	7	8	9
10	11	12	13	14	15	16
17	18	19	20	21	22	23
24	25	26	27	28	29	30
31						

## June / Junio

MON LUN	TUE MAR	WED MIÉ	THU JUE	FRI VIE	SAT SÁB	SUN DOM
	1	2	3	4	5	6
7	8	9	10	11	12	13
14	15	16	17	18	19	20
21	22	23	24	25	26	27
28	29	30				

## July / Julio

MON LUN	TUE MAR	WED MIÉ	THU JUE	FRI VIE	SAT SÁB	SUN DOM
			1	2	3	4
5	6	7	8	9	10	11
12	13	14	15	16	17	18
19	20	21	22	23	24	25
26	27	28	29	30	31	

## August / Agosto

MON LUN	TUE MAR	WED MIÉ	THU JUE	FRI VIE	SAT SÁB	SUN DOM
						1
2	3	4	5	6	7	8
9	10	11	12	13	14	15
16	17	18	19	20	21	22
23	24	25	26	27	28	29
30	31					

## September / Septiembre

MON LUN	TUE MAR	WED MIÉ	THU JUE	FRI VIE	SAT SÁB	SUN DOM
		1	2	3	4	5
6	7	8	9	10	11	12
13	14	15	16	17	18	19
20	21	22	23	24	25	26
27	28	29	30			

## October / Octubre

MON LUN	TUE MAR	WED MIÉ	THU JUE	FRI VIE	SAT SÁB	SUN DOM
				1	2	3
4	5	6	7	8	9	10
11	12	13	14	15	16	17
18	19	20	21	22	23	24
25	26	27	28	29	30	31

## November / Noviembre

MON LUN	TUE MAR	WED MIÉ	THU JUE	FRI VIE	SAT SÁB	SUN DOM
1	2	3	4	5	6	7
8	9	10	11	12	13	14
15	16	17	18	19	20	21
22	23	24	25	26	27	28
29	30					

## December / Diciembre

MON LUN	TUE MAR	WED MIÉ	THU JUE	FRI VIE	SAT SÁB	SUN DOM
		1	2	3	4	5
6	7	8	9	10	11	12
13	14	15	16	17	18	19
20	21	22	23	24	25	26
27	28	29	30	31		

Wave of change is Iberostar’s pioneering responsible tourism movement to move towards a circular economy, promote the responsible consumption of seafood, and improve coastal health.

In this third edition of the “Wave of Change” calendar, we spoke to students about the “Health of our ocean”, where they learned about the importance of the ocean and how to contribute to its protection.



We thank Flankers Primary School for its efforts and work for children, and for being part of our initiative.



This calendar is made with  
100% recycled paper

# January

Enero 2021

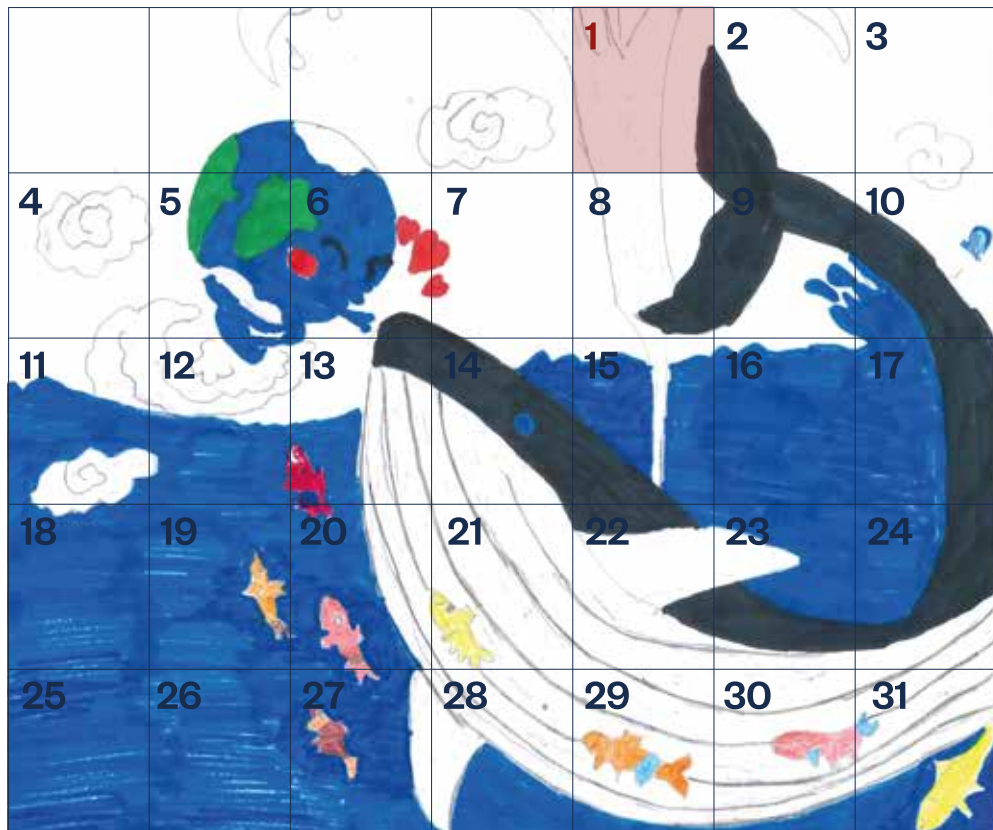
February / Febrero

MON LUN	TUE MAR	WED MIÉ	THU JUE	FRI VIE	SAT SÁB	SUN DOM
1	2	3	4	5	6	7
8	9	10	11	12	13	14
15	16	17	18	19	20	21
22	23	24	25	26	27	28

More than 70% of the Earth's surface  
is covered by seas and oceans.

## 01. New years day

**Mon** Lun  
**Tue** Mar  
**Wed** Mié  
**Thu** Jue  
**Fri** Vie  
**Sat** Sáb  
**Sun** Dom



# February

February 2021

*The ocean is the largest unexplored place on Earth, less than 5% of it has been explored.*

March / Marzo

MON LUN	TUE MAR	WED MIÉ	THU JUE	FRI VIE	SAT SÁB	SUN DOM
1	2	3	4	5	6	7
8	9	10	11	12	13	14
15	16	17	18	19	20	21
22	23	24	25	26	27	28
29	30	31				

02. World Wetlands day | 14. Valentine's day | 17. Ash Wednesday

**Mon** Lun    **Tue** Mar    **Wed** Mié    **Thu** Jue    **Fri** Vie    **Sat** Sáb    **Sun** Dom

1	2	3	4	5	6	7
8	9	10	11	12	13	14
15	16	17	18	19	20	21
22	23	24	25	26	27	28

# March

Marzo 2021

*Between 50% and 85% of Earth's oxygen comes from the oceans and it's produced by algae and marine plants.*

April / Abril

MON LUN	TUE MAR	WED MIÉ	THU JUE	FRI VIE	SAT SÁB	SUN DOM
			1	2	3	4
5	6	7	8	9	10	11
12	13	14	15	16	17	18
19	20	21	22	23	24	25
26	27	28	29	30		

03. World wildlife day | 18. Global recycling day | 21. World forest day | 27. Earth hour

**Mon** Lun      **Tue** Mar      **Wed** Mié      **Thu** Jue      **Fri** Vie      **Sat** Sáb      **Sun** Dom

1	2	3	4	5	6	7
8	9	10	11	12	13	14
15	16	17	18	19	20	21
22	23	24	25	26	27	28
29	30	31				

The calendar grid is overlaid on a blue background with a white grid. A large, stylized illustration of a whale is centered across the middle of the calendar. The whale is drawn in shades of blue and yellow. At the bottom of the calendar, the words 'STOP PLASTIC POLLUTION!' are written in large, bold, orange letters. The date 3 is highlighted in green, and dates 18, 21, and 27 are also highlighted in green.



# April

April 2021

*The oceans are the world's largest ecosystem, home to 80% of the planet's biodiversity.*

May / Mayo

MON LUN	TUE MAR	WED MIÉ	THU JUE	FRI VIE	SAT SÁB	SUN DOM
					1	2
3	4	5	6	7	8	9
10	11	12	13	14	15	16
17	18	19	20	21	22	23
24	25	26	27	28	29	30
31						

02. Good Friday | 04. Easter Sunday | 05. Easter Monday | 22. Earth Day

Mon Lun	Tue Mar	Wed Mié	Thu Jue	Fri Vie	Sat Sáb	Sun Dom
			1	2	3	4
5	6	7	8	9	10	11
12	13	14	15	16	17	18
19	20	21	22	23	24	25
26	27	28	29	30		

# May

Mayo 2021

June / Junio

MON LUN	TUE MAR	WED MIÉ	THU JUE	FRI VIE	SAT SÁB	SUN DOM
	1	2	3	4	5	6
7	8	9	10	11	12	13
14	15	16	17	18	19	20
21	22	23	24	25	26	27
28	29	30				

Only 1.5% of the world's oceans are considered marine protected areas.

09. Mother's day | 21. World endangered species day | 22. International day for biological diversity  
23. Labour day | 23. World turtle day | 24. Labour day holiday

**Mon** Lun    **Tue** Mar    **Wed** Mié    **Thu** Jue    **Fri** Vie    **Sat** Sáb    **Sun** Dom

					1	2
3	4	5	6	7	8	9
10	11	12	13	14	15	16
17	18	19	20	21	22	23
24	25	26	27	28	29	30
31						



# June

Junio 2021

*The ocean absorbs 33% of human-made carbon dioxide (CO2) emissions (anthropogenic pollution).*

July / Julio

MON LUN	TUE MAR	WED MIÉ	THU JUE	FRI VIE	SAT SÁB	SUN DOM
			1	2	3	4
5	6	7	8	9	10	11
12	13	14	15	16	17	18
19	20	21	22	23	24	25
26	27	28	29	30	31	

05. World environment day | 08. World oceans day | 20. Father's day | 22. World rainforest day

Mon Lun	Tue Mar	Wed Mié	Thu Jue	Fri Vie	Sat Sáb	Sun Dom
	1	2	3	4	5	6
7	8	9	10	11	12	13
14	15	16	17	18	19	20
21	22	23	24	25	26	27
28	29	30				

# July

Julio 2021

Seafood is the main food source  
for about 1 billion people.

August / Agosto

MON LUN	TUE MAR	WED MIÉ	THU JUE	FRI VIE	SAT SÁB	SUN DOM
2	3	4	5	6	7	1
9	10	11	12	13	14	15
16	17	18	19	20	21	22
23	24	25	26	27	28	29
30	31					

**Mon**      **Tue**      **Wed**      **Thu**      **Fri**      **Sat**      **Sun**  
*Lun*      *Mar*      *Mié*      *Jue*      *Vie*      *Sáb*      *Dom*



# August

Agosto 2021

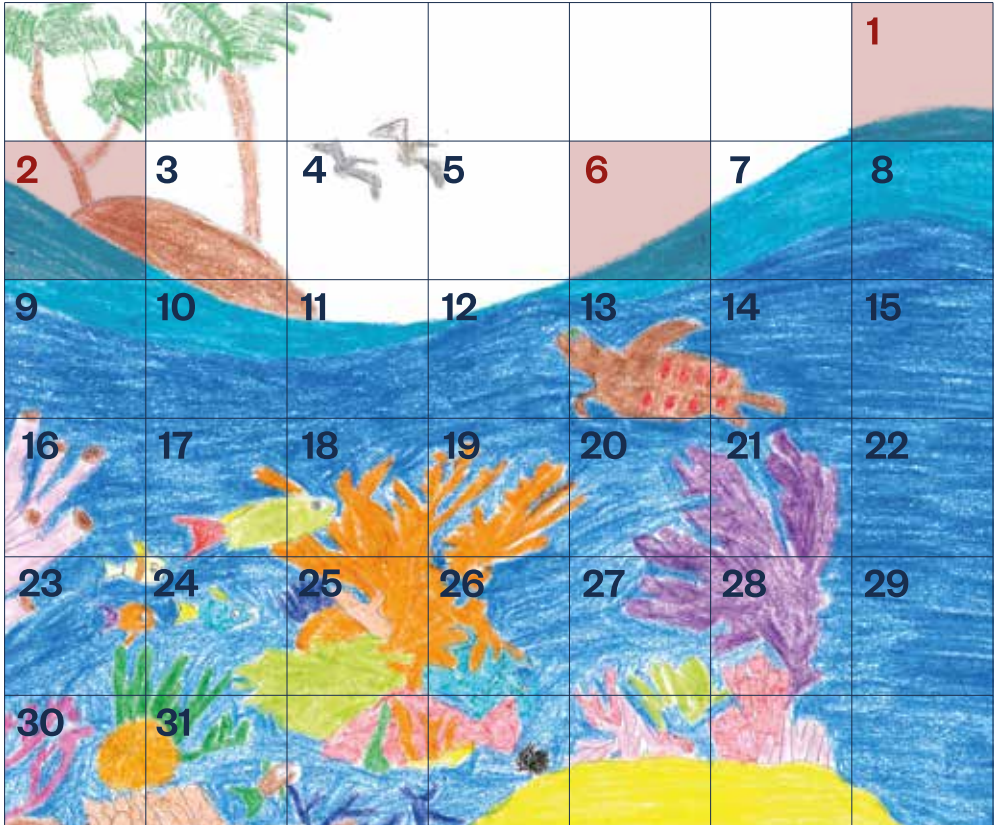
*More than 13,000,000 tons of plastics end up in the oceans every year, and one third of the fish caught for human consumption contain plastic.*

September / Septiembre

MON LUN	TUE MAR	WED MIÉ	THU JUE	FRI VIE	SAT SÁB	SUN DOM
		1	2	3	4	5
6	7	8	9	10	11	12
13	14	15	16	17	18	19
20	21	22	23	24	25	26
27	28	29	30			

01. Emancipation day | 02. Emancipation day observed | 06. Independence day

**Mon** Lun    **Tue** Mar    **Wed** Mié    **Thu** Jue    **Fri** Vie    **Sat** Sáb    **Sun** Dom





# September

Septiembre 2021

63% of the world's fish stocks are considered to be overexploited.

October / Octubre

MON LUN	TUE MAR	WED MIÉ	THU JUE	FRI VIE	SAT SÁB	SUN DOM
				1	2	3
4	5	6	7	8	9	10
11	12	13	14	15	16	17
18	19	20	21	22	23	24
25	26	27	28	29	30	31

16. World ozone day | 18. International coastal cleanup day | 21. Zero emissions day | 26. World rivers day

**Mon** Lun    **Tue** Mar    **Wed** Mié    **Thu** Jue    **Fri** Vie    **Sat** Sáb    **Sun** Dom

		1	2	3	4	5
6	7	8	9	10	11	12
13	14	15	16	17	18	19
20	21	22	23	24	25	26
27	28	29	30			

# October

Octubre 2021

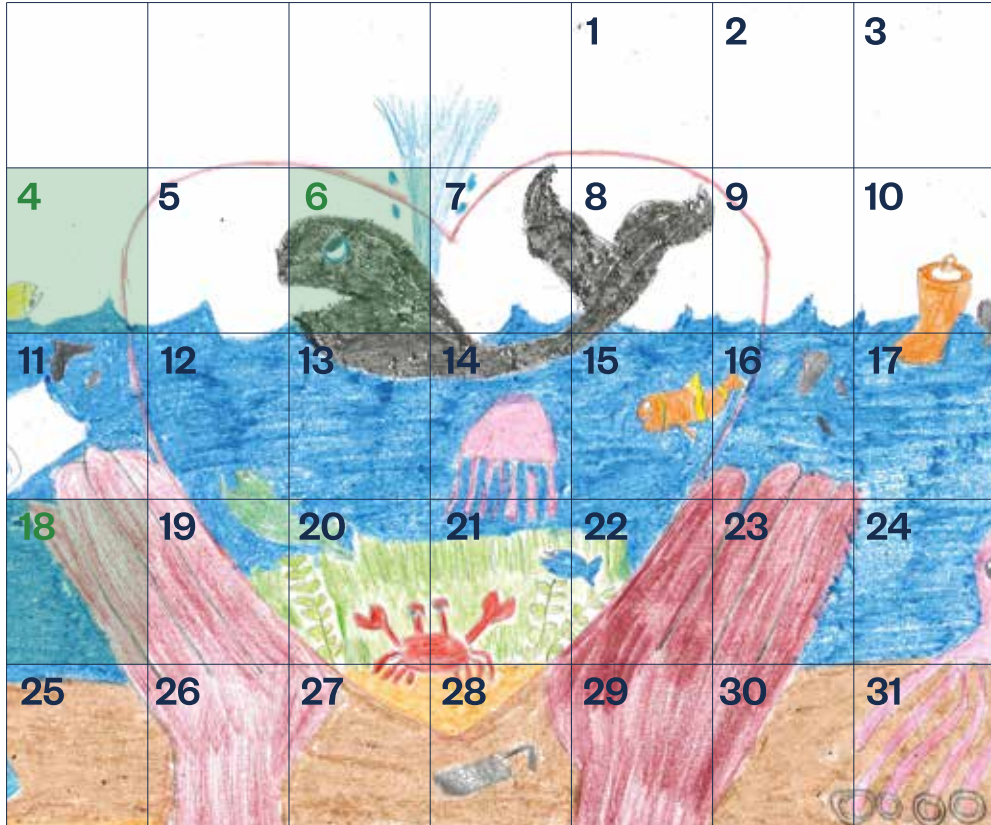
To help protect the ocean we must avoid using single-use or disposable plastic products.

November / Noviembre

MON LUN	TUE MAR	WED MIÉ	THU JUE	FRI VIE	SAT SÁB	SUN DOM
1	2	3	4	5	6	7
8	9	10	11	12	13	14
15	16	17	18	19	20	21
22	23	24	25	26	27	28
29	30					

04. World habitat day | 06. Energy efficiency day | 18. National heroes day

Mon Lun	Tue Mar	Wed Mié	Thu Jue	Fri Vie	Sat Sáb	Sun Dom
				1	2	3
4	5	6	7	8	9	10
11	12	13	14	15	16	17
18	19	20	21	22	23	24
25	26	27	28	29	30	31





# November

Noviembre 2021

*Don't forget to care for your beach and collaborate on beach cleanups in your community.*

December / Diciembre

MON LUN	TUE MAR	WED MIÉ	THU JUE	FRI VIE	SAT SÁB	SUN DOM
		1	2	3	4	5
6	7	8	9	10	11	12
13	14	15	16	17	18	19
20	21	22	23	24	25	26
27	28	29	30	31		

Mon Lun	Tue Mar	Wed Mié	Thu Jue	Fri Vie	Sat Sáb	Sun Dom
1	2	3	4	5	6	7
8	9	10	11	12	13	14
15	16	17	18	19	20	21
22	23	24	25	26	27	28
29	30					

# December

*Diciembre 2021*

January / Enero 2022

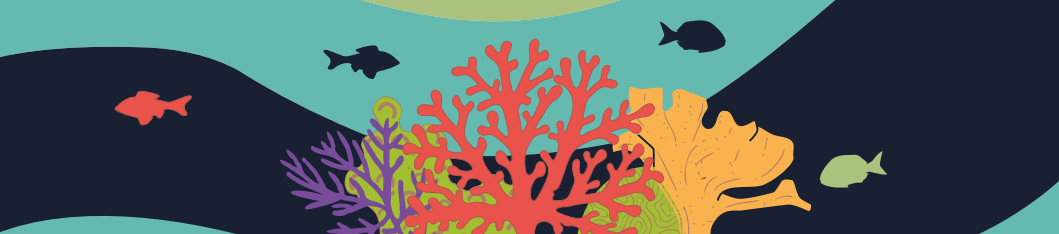
MON LUN	TUE MAR	WED MIÉ	THU JUE	FRI VIE	SAT SÁB	SUN DOM
					1	2
3	4	5	6	7	8	9
10	11	12	13	14	15	16
17	18	19	20	21	22	23
24	25	26	27	28	29	30
31						

*We depend on the ocean and the ocean depends on us.*

04. Wildlife conservation day | 24. Christmas Eve | 25. Christmas day | 26. Boxing day  
31. New years eve

**Lun**      **Mar**      **Mié**      **Jue**      **Vie**      **Sáb**      **Dom**  
*Mon*      *Tue*      *Wed*      *Thu*      *Fri*      *Sat*      *Sun*

		1	2	3	4	5
6	7	8	9	10	11	12
13	14	15	16	17	18	19
20	21	22	23	24	25	26
27	28	29	30	31		



CHANGE  
OF  
WAVE

